

DP-TB-216

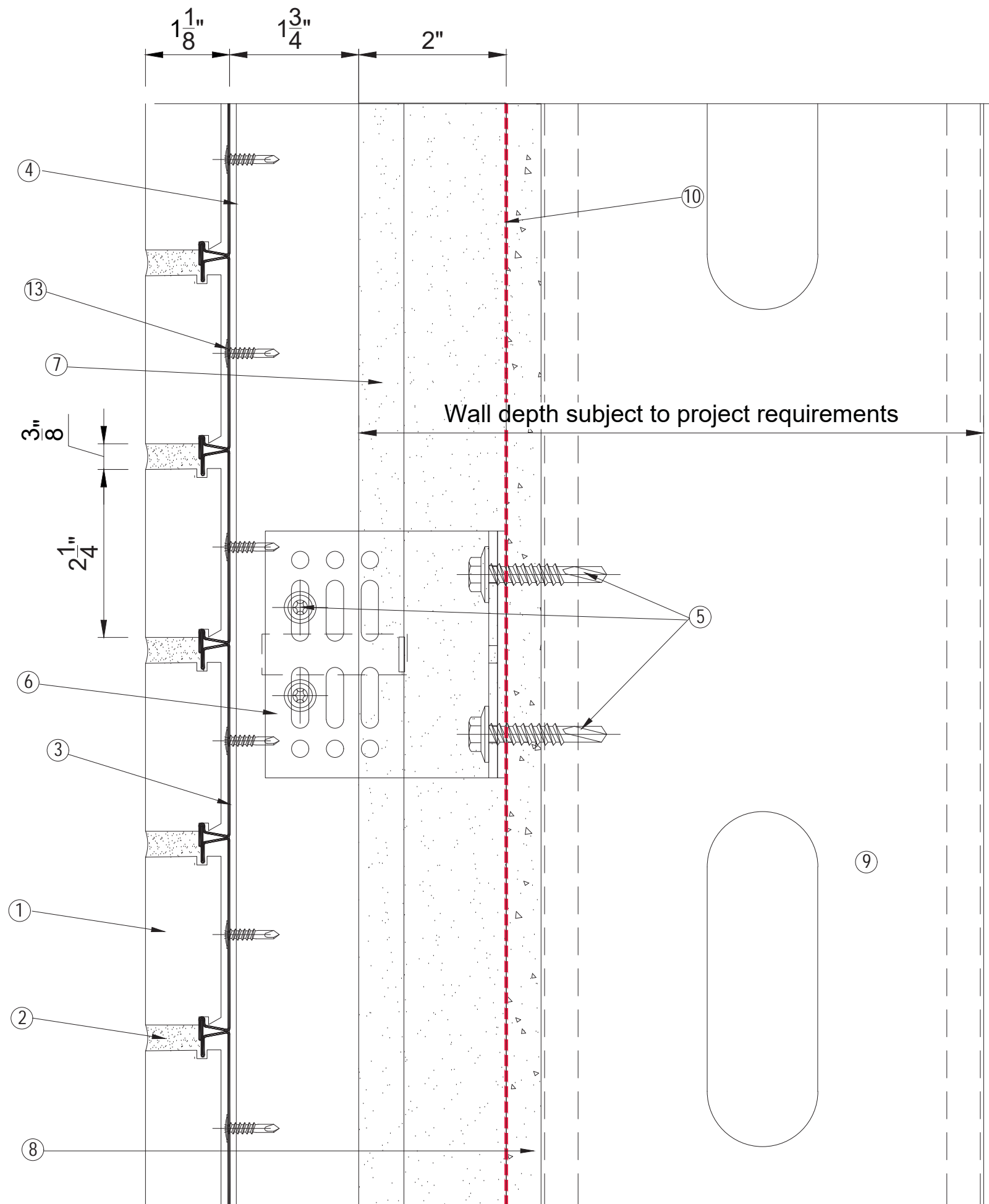
Tru-Brix

Tru-Brix Rainscreen System
Typical Drawings Set

12/29/2017



ALL ELEVATIONS ARE VIEWED FROM OUTSIDE
UNLESS OTHERWISE STATED



- ① Tru-Brix anchored brick
- ② Tru-Brix mortar
- ③ Tru-Brix tray
- ④ Vertical aluminium angle
- ⑤ Stainless Steel fixing by others subject to engineers calculations
- ⑥ Aluminium bracket with thermal shim subject to engineers calculations
- ⑦ Insulation (by others) thickness subject to U-value calculations
- ⑧ Sheathing board (by others)
- ⑨ Metal framing (by others)
- ⑩ Air/ Water barrier (by others)
- ⑪ Metal flashing (by others)
- ⑫ Caulk joint and backing rod (by others)
- ⑬ 8-18x $\frac{3}{4}$ " T-2 Lath 410 Stainless Steel

Rev.	Date	By	Comments
-	06-07-17	CDB	Approval
Drawing Status :			
FOR INFORMATION			
Contract :			
TRU-BRIX RAINSCREEN FACADE SYSTEM			



Do not scale from this drawing. If in doubt ask		
Drawing Title :		
Vertical section detail through brick on metal frame		
Scale :	Checked :	Drawn : CB
NTS	Date :	Date : 06-07-17
Size	Drawing No.	Rev.
A3	DET-001	/

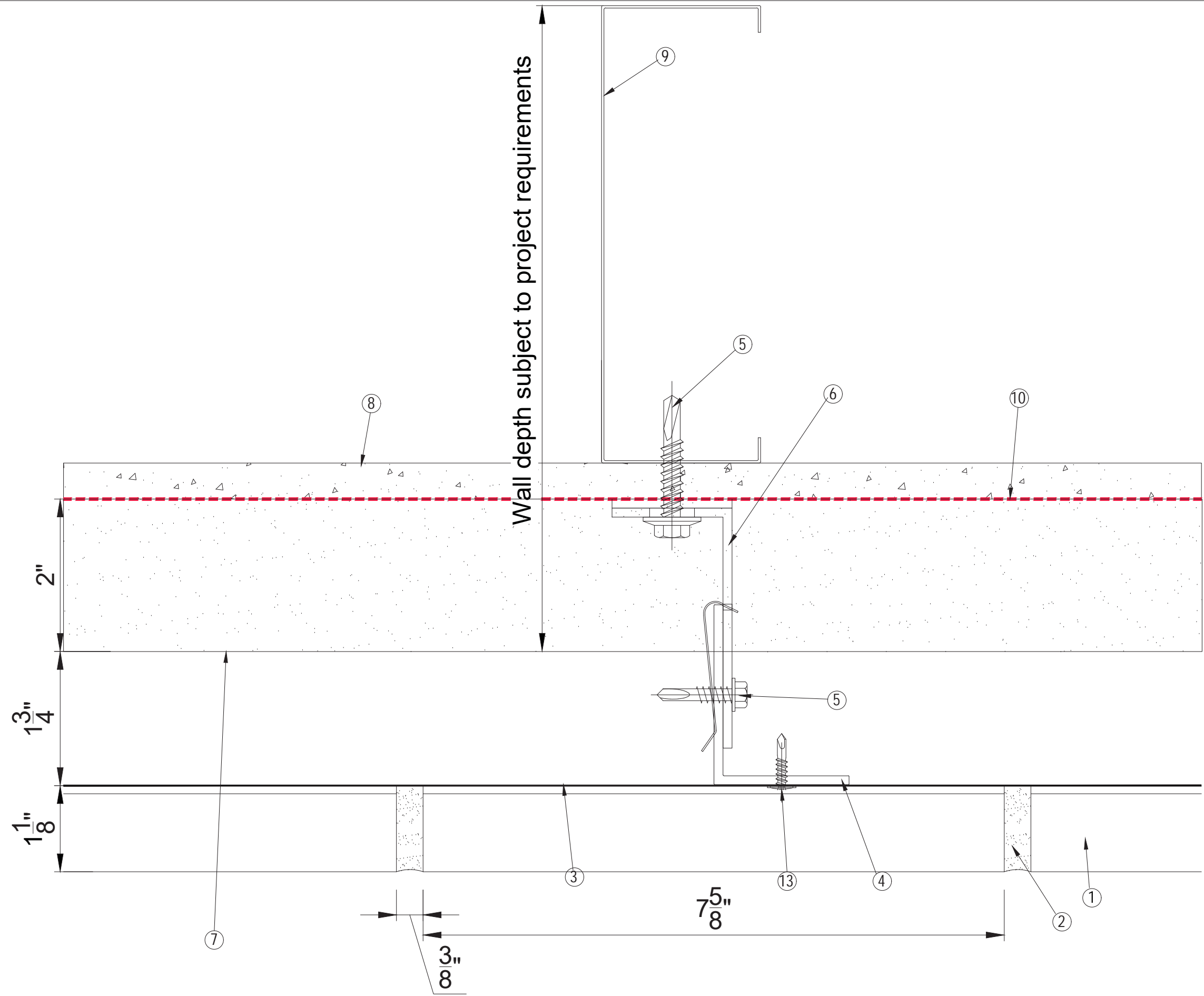
ALL ELEVATIONS ARE VIEWED FROM OUTSIDE
UNLESS OTHERWISE STATED

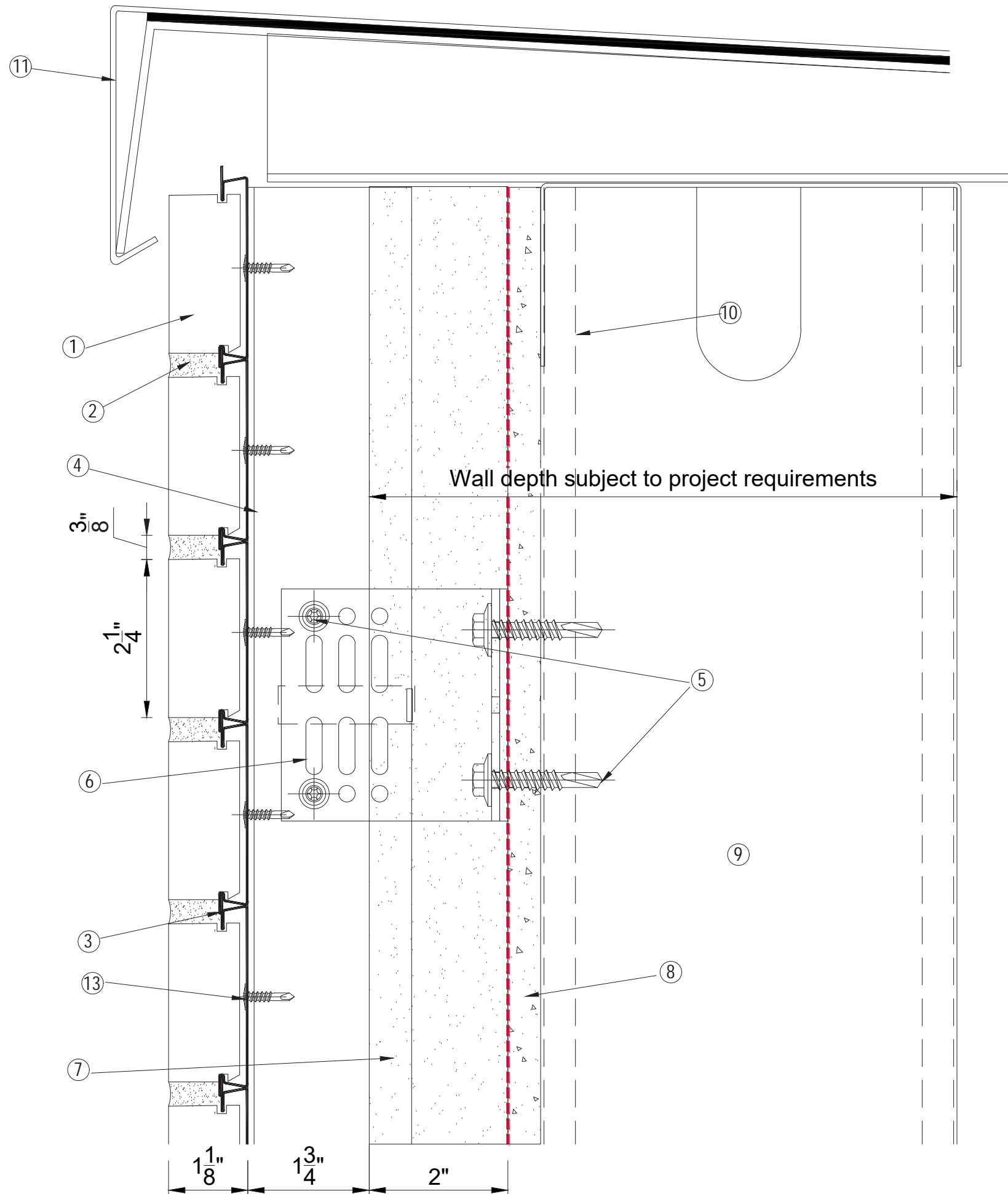
- ① Tru-Brix anchored brick
- ② Tru-Brix mortar
- ③ Tru-Brix tray
- ④ Vertical aluminium angle
- ⑤ Stainless Steel fixing by others subject to engineers calculations
- ⑥ Aluminium bracket with thermal shim subject to engineers calculations
- ⑦ Insulation (by others) thickness subject to U-value calculations
- ⑧ Sheathing board (by others)
- ⑨ Metal framing (by others)
- ⑩ Air/ Water barrier (by others)
- ⑪ Metal flashing (by others)
- ⑫ Caulk joint and backing rod (by others)
- ⑬ 8-18x $\frac{3}{4}$ " T-2 Lath 410 Stainless Steel

Rev.	Date	By	Comments
-	06-07-17	CDB	Approval
Drawing Status :			
FOR INFORMATION			
Contract :			
TRU-BRIX RAINSCREEN FACADE SYSTEM			



Do not scale from this drawing. If in doubt ask		
Drawing Title :		
Horizontal section detail through brick on metal frame		
Scale :	Checked :	Drawn : CB
NTS	Date :	Date : 06-07-17
Size	Drawing No.	Rev.
A3	DET-002	/





ALL ELEVATIONS ARE VIEWED FROM OUTSIDE
UNLESS OTHERWISE STATED

- ① Tru-Brix anchored brick
- ② Tru-Brix mortar
- ③ Tru-Brix tray
- ④ Vertical aluminium angle
- ⑤ Stainless Steel fixing by others subject to engineers calculations
- ⑥ Aluminium bracket with thermal shim subject to engineers calculations
- ⑦ Insulation (by others) thickness subject to U-value calculations
- ⑧ Sheathing board (by others)
- ⑨ Metal framing (by others)
- ⑩ Air/ Water barrier (by others)
- ⑪ Metal flashing (by others)
- ⑫ Caulk joint and backing rod (by others)
- ⑬ 8-18x $\frac{3}{4}$ " T-2 Lath 410 Stainless Steel

Rev.	Date	By	Comments
-	06-07-17	CDB	Approval

Drawing Status :
FOR INFORMATION

Contract :
TRU-BRIX RAINSCREEN
FACADE SYSTEM



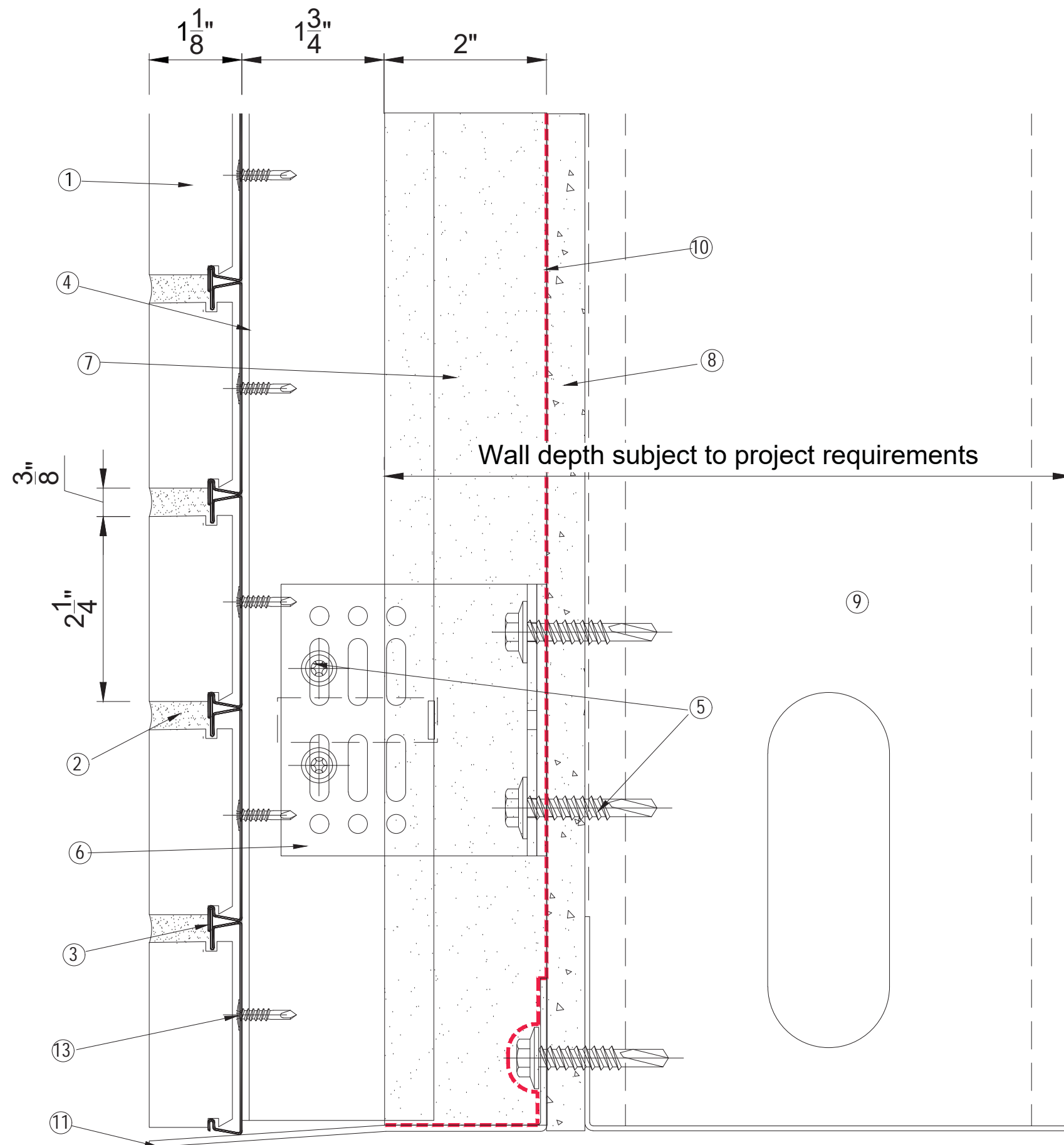
Do not scale from this drawing. If in doubt ask

Drawing Title :
Vertical section detail through
brick on metal frame to capping

Scale :	Checked :	Drawn : CB
NTS	Date :	Date : 06-07-17

Size	Drawing No.	Rev.
A3	DET-003	/

ALL ELEVATIONS ARE VIEWED FROM OUTSIDE
UNLESS OTHERWISE STATED



- ① Tru-Brix anchored brick
- ② Tru-Brix mortar
- ③ Tru-Brix tray
- ④ Vertical aluminium angle
- ⑤ Stainless Steel fixing by others subject to engineers calculations
- ⑥ Aluminium bracket with thermal shim subject to engineers calculations
- ⑦ Insulation (by others) thickness subject to U-value calculations
- ⑧ Sheathing board (by others)
- ⑨ Metal framing (by others)
- ⑩ Air/ Water barrier (by others)
- ⑪ Metal flashing (by others)
- ⑫ Caulk joint and backing rod (by others)
- ⑬ 8-18x $\frac{3}{4}$ " T-2 Lath 410 Stainless Steel

Rev.	Date	By	Comments
	06-07-17	CDB	Approval

Drawing Status :
FOR INFORMATION

Contract :
TRU-BRIX RAINSCREEN
FACADE SYSTEM

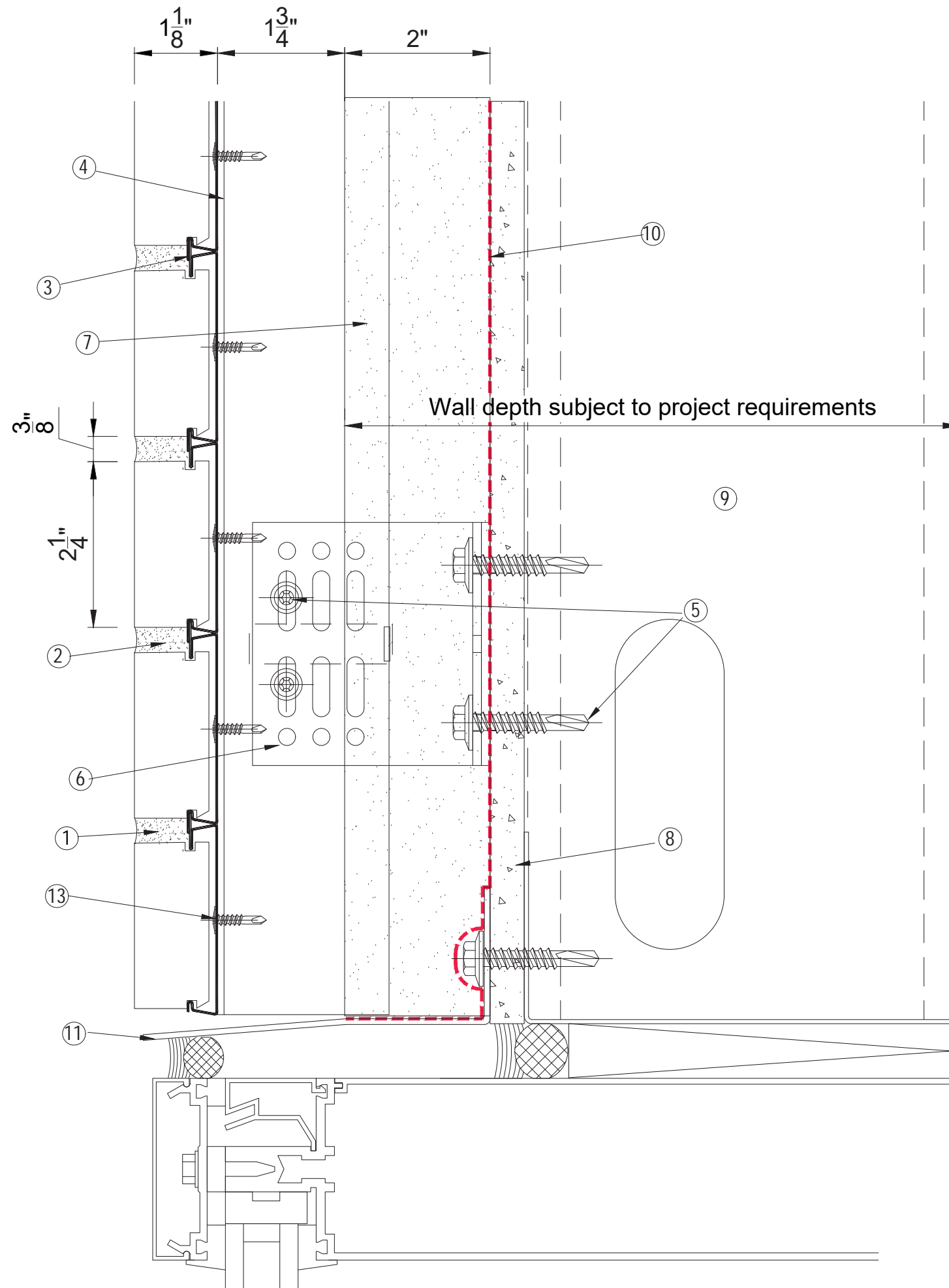


Do not scale from this drawing. If in doubt ask

Drawing Title :
Vertical section detail through
base of brick on metal frame

Scale :	Checked :	Drawn : CB
NTS	Date :	Date : 06-07-17

Size	Drawing No.	Rev.
A3	DET-004	/



ALL ELEVATIONS ARE VIEWED FROM OUTSIDE
UNLESS OTHERWISE STATED

- ① Tru-Brix anchored brick
- ② Tru-Brix mortar
- ③ Tru-Brix tray
- ④ Vertical aluminium angle
- ⑤ Stainless Steel fixing by others subject to engineers calculations
- ⑥ Aluminium bracket with thermal shim subject to engineers calculations
- ⑦ Insulation (by others) thickness subject to U-value calculations
- ⑧ Sheathing board (by others)
- ⑨ Metal framing (by others)
- ⑩ Air/ Water barrier (by others)
- ⑪ Metal flashing (by others)
- ⑫ Caulk joint and backing rod (by others)
- ⑬ 8-18x $\frac{3}{4}$ " T-2 Lath 410 Stainless Steel

Rev.	Date	By	Comments
-	06-07-17	CDB	Approval

Drawing Status :
FOR INFORMATION

Contract :
TRU-BRIX RAINSCREEN
FACADE SYSTEM

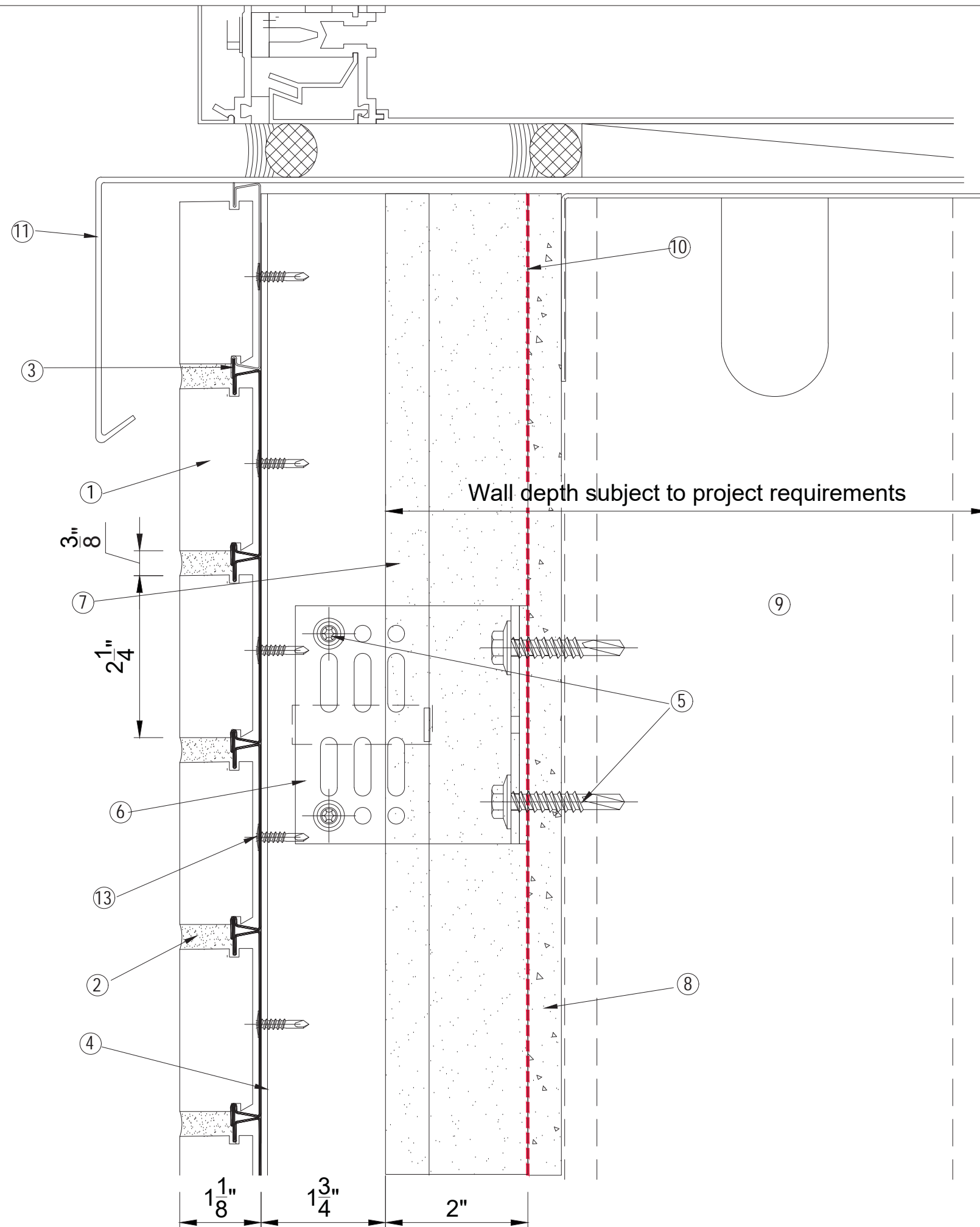


Do not scale from this drawing. If in doubt ask

Drawing Title :
Vertical section detail through
base of brick on metal frame
and window head

Scale :	Checked :	Drawn : CB
NTS	Date :	Date : 06-07-17

Size	Drawing No.	Rev.
A3	DET-005	/



ALL ELEVATIONS ARE VIEWED FROM OUTSIDE UNLESS OTHERWISE STATED

- ① Tru-Brix anchored brick
- ② Tru-Brix mortar
- ③ Tru-Brix tray
- ④ Vertical aluminium angle
- ⑤ Stainless Steel fixing by others subject to engineers calculations
- ⑥ Aluminium bracket with thermal shim subject to engineers calculations
- ⑦ Insulation (by others) thickness subject to U-value calculations
- ⑧ Sheathing board (by others)
- ⑨ Metal framing (by others)
- ⑩ Air/ Water barrier (by others)
- ⑪ Metal flashing (by others)
- ⑫ Caulk joint and backing rod (by others)
- ⑬ 8-18x $\frac{3}{4}$ " T-2 Lath 410 Stainless Steel

Rev.	Date	By	Comments
-	06-07-17	CDB	Approval

Drawing Status :
FOR INFORMATION

Contract :
TRU-BRIX RAINSCREEN
FACADE SYSTEM



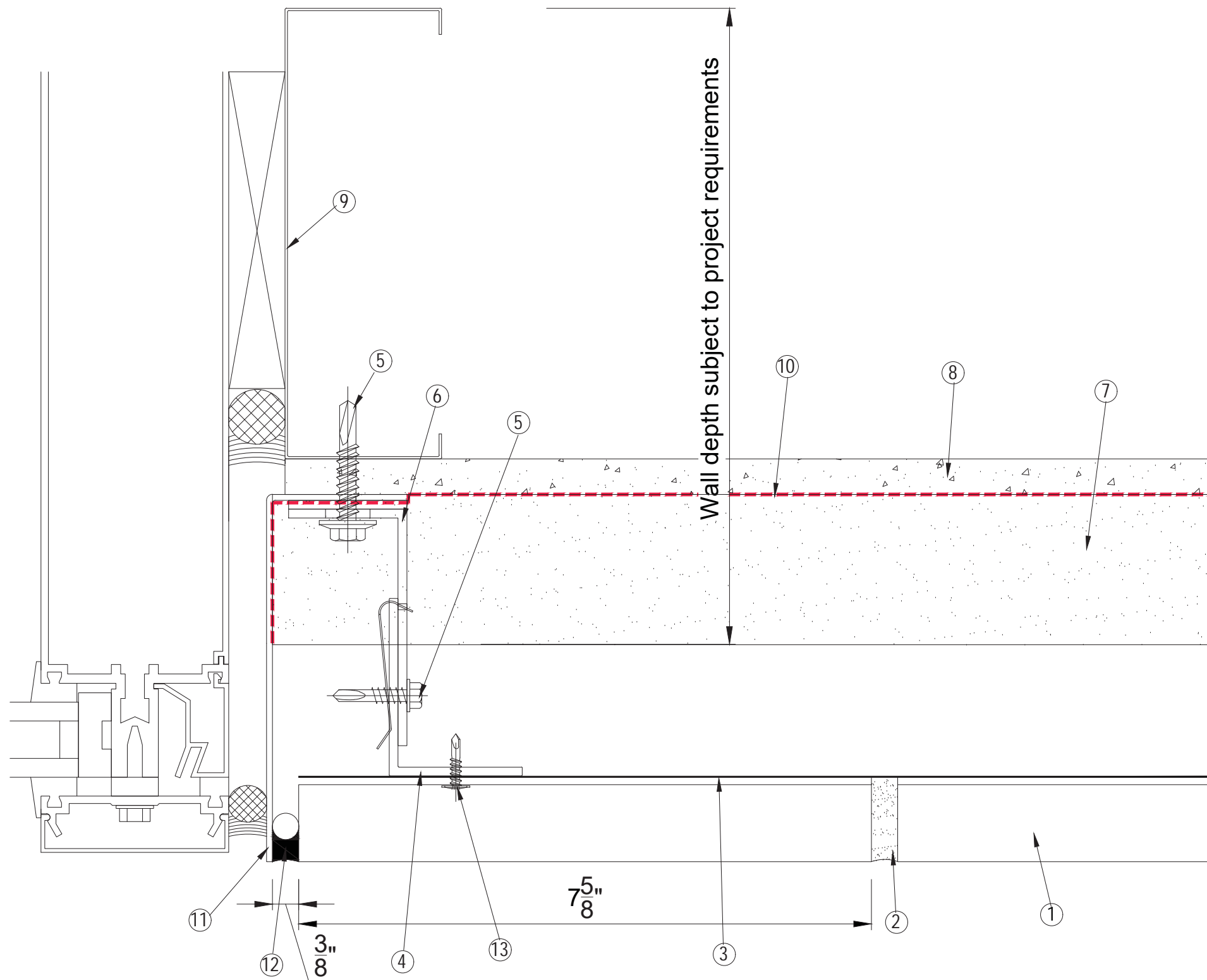
Do not scale from this drawing. If in doubt ask

Drawing Title :
Vertical section detail through head of brick on metal frame and window cill

Scale :	Checked :	Drawn : CB
NTS	Date :	Date : 06-07-17

Size	Drawing No.	Rev.
A3	DET-006	/

ALL ELEVATIONS ARE VIEWED FROM OUTSIDE
UNLESS OTHERWISE STATED



- ① Tru-Brix anchored brick
- ② Tru-Brix mortar
- ③ Tru-Brix tray
- ④ Vertical aluminium angle
- ⑤ Stainless Steel fixing by others subject to engineers calculations
- ⑥ Aluminium bracket with thermal shim subject to engineers calculations
- ⑦ Insulation (by others) thickness subject to U-value calculations
- ⑧ Sheathing board (by others)
- ⑨ Metal framing (by others)
- ⑩ Air/ Water barrier (by others)
- ⑪ Metal flashing (by others)
- ⑫ Caulk joint and backing rod (by others)
- ⑬ 8-18x $\frac{3}{4}$ " T-2 Lath 410 Stainless Steel

Rev.	Date	By	Comments
-	06-07-17	CDB	Approval

Drawing Status :
FOR INFORMATION

Contract :
TRU-BRIX RAINSCREEN
FACADE SYSTEM



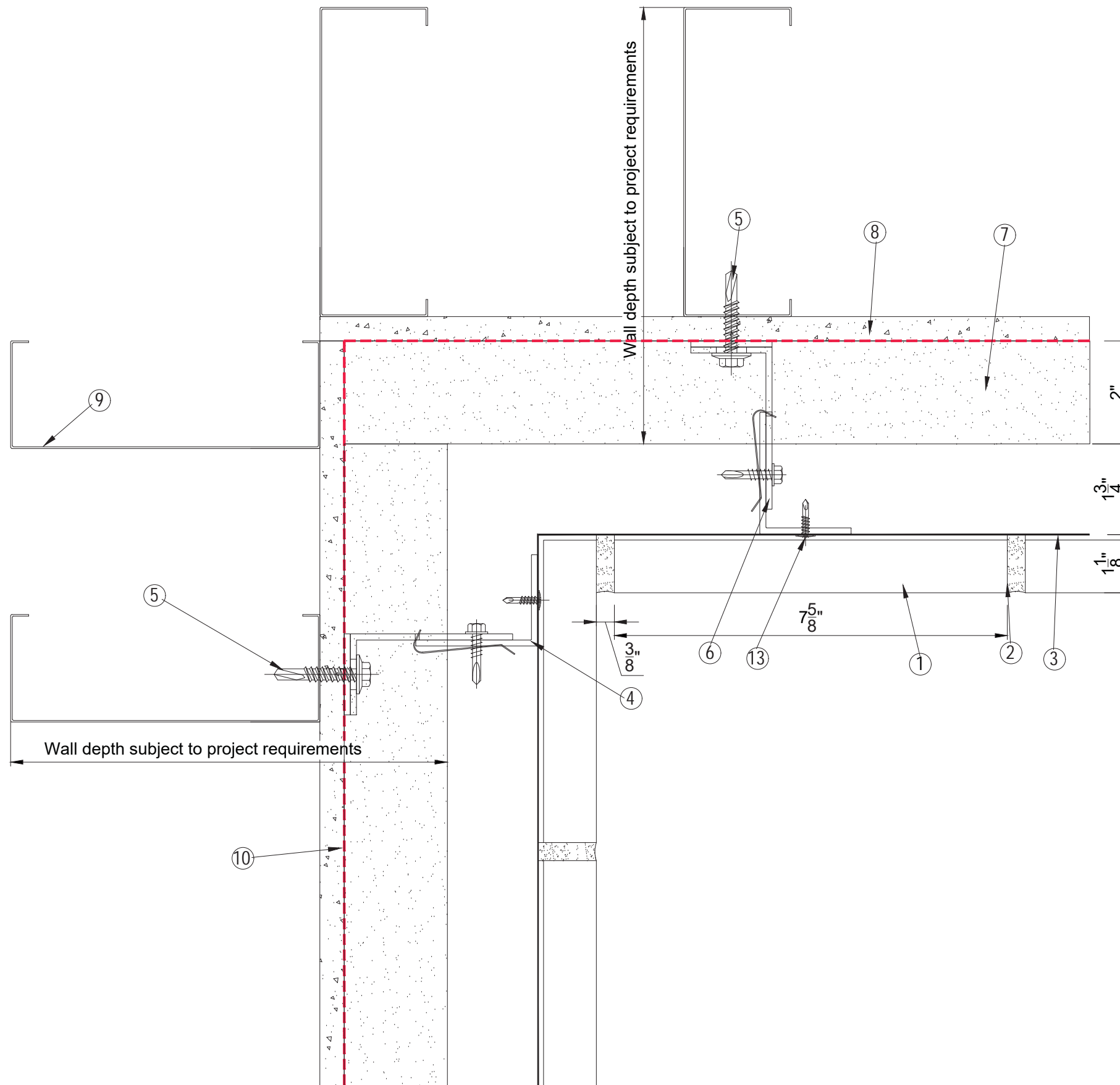
Do not scale from this drawing. If in doubt ask

Drawing Title :
Horizontal section detail
through brick on metal frame
and window jamb

Scale :	Checked :	Drawn : CB
NTS	Date :	Date : 06-07-17

Size	Drawing No.	Rev.
A3	DET-007	/

ALL ELEVATIONS ARE VIEWED FROM OUTSIDE
UNLESS OTHERWISE STATED

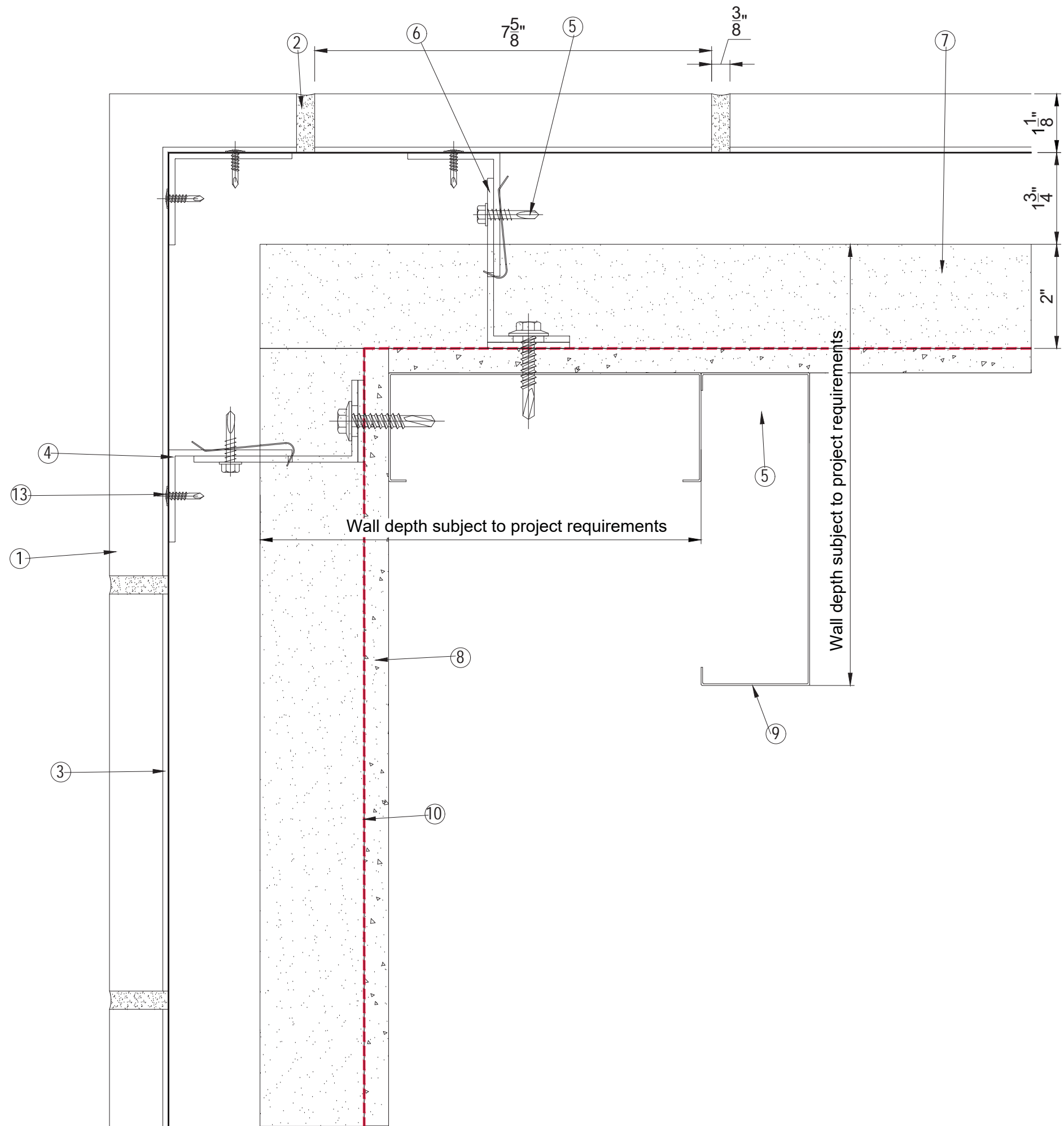


- ① Tru-Brix anchored brick
- ② Tru-Brix mortar
- ③ Tru-Brix tray
- ④ Vertical aluminium angle
- ⑤ Stainless Steel fixing by others subject to engineers calculations
- ⑥ Aluminium bracket with thermal shim subject to engineers calculations
- ⑦ Insulation (by others) thickness subject to U-value calculations
- ⑧ Sheathing board (by others)
- ⑨ Metal framing (by others)
- ⑩ Air/ Water barrier (by others)
- ⑪ Metal flashing (by others)
- ⑫ Caulk joint and backing rod (by others)
- ⑬ 8-18x $\frac{3}{4}$ " T-2 Lath 410 Stainless Steel

Rev.	Date	By	Comments
-	06-07-17	CDB	Approval
Drawing Status :			
FOR INFORMATION			
Contract :			
TRU-BRIX RAINSCREEN FACADE SYSTEM			



Do not scale from this drawing. If in doubt ask		
Drawing Title :		
Horizontal section detail through brick internal corner		
Scale :	Checked :	Drawn : CB
NTS	Date :	Date : 06-07-17
Size	Drawing No.	Rev.
A3	DET-008	/



ALL ELEVATIONS ARE VIEWED FROM OUTSIDE UNLESS OTHERWISE STATED

- ① Tru-Brix anchored brick
- ② Tru-Brix mortar
- ③ Tru-Brix tray
- ④ Vertical aluminium angle
- ⑤ Stainless Steel fixing by others subject to engineers calculations
- ⑥ Aluminium bracket with thermal shim subject to engineers calculations
- ⑦ Insulation (by others) thickness subject to U-value calculations
- ⑧ Sheathing board (by others)
- ⑨ Metal framing (by others)
- ⑩ Air/ Water barrier (by others)
- ⑪ Metal flashing (by others)
- ⑫ Caulk joint and backing rod (by others)
- ⑬ 8-18x3/4" T-2 Lath 410 Stainless Steel

Rev.	Date	By	Comments
-	06-07-17	CDB	Approval

Drawing Status :
FOR INFORMATION

Contract :
TRU-BRIX RAINSCREEN FACADE SYSTEM

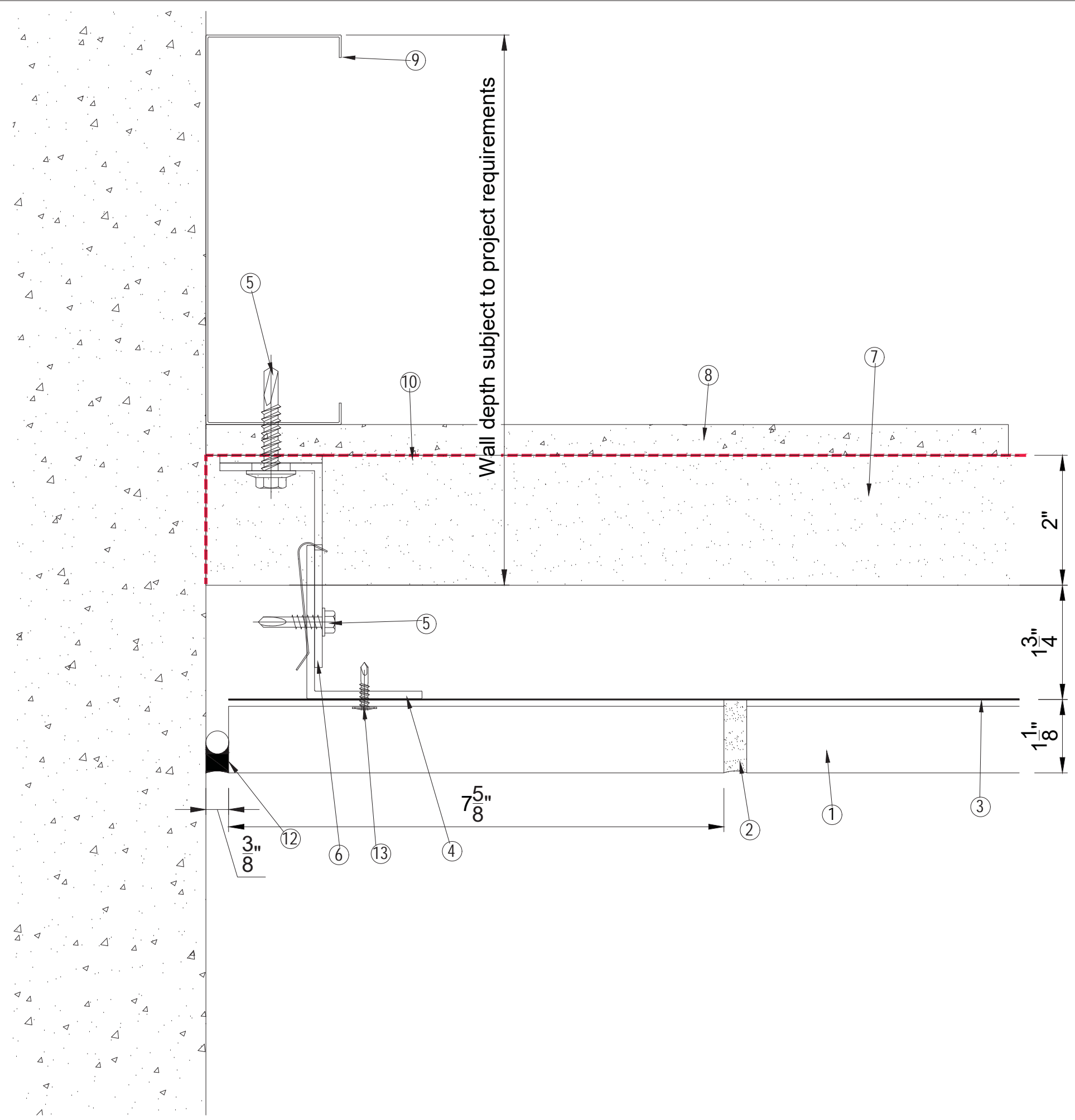


Do not scale from this drawing. If in doubt ask

Drawing Title :
Horizontal section detail through brick external corner

Scale :	Checked :	Drawn : CB
NTS	Date :	Date : 06-07-17

Size	Drawing No.	Rev.
A3	DET-009	/



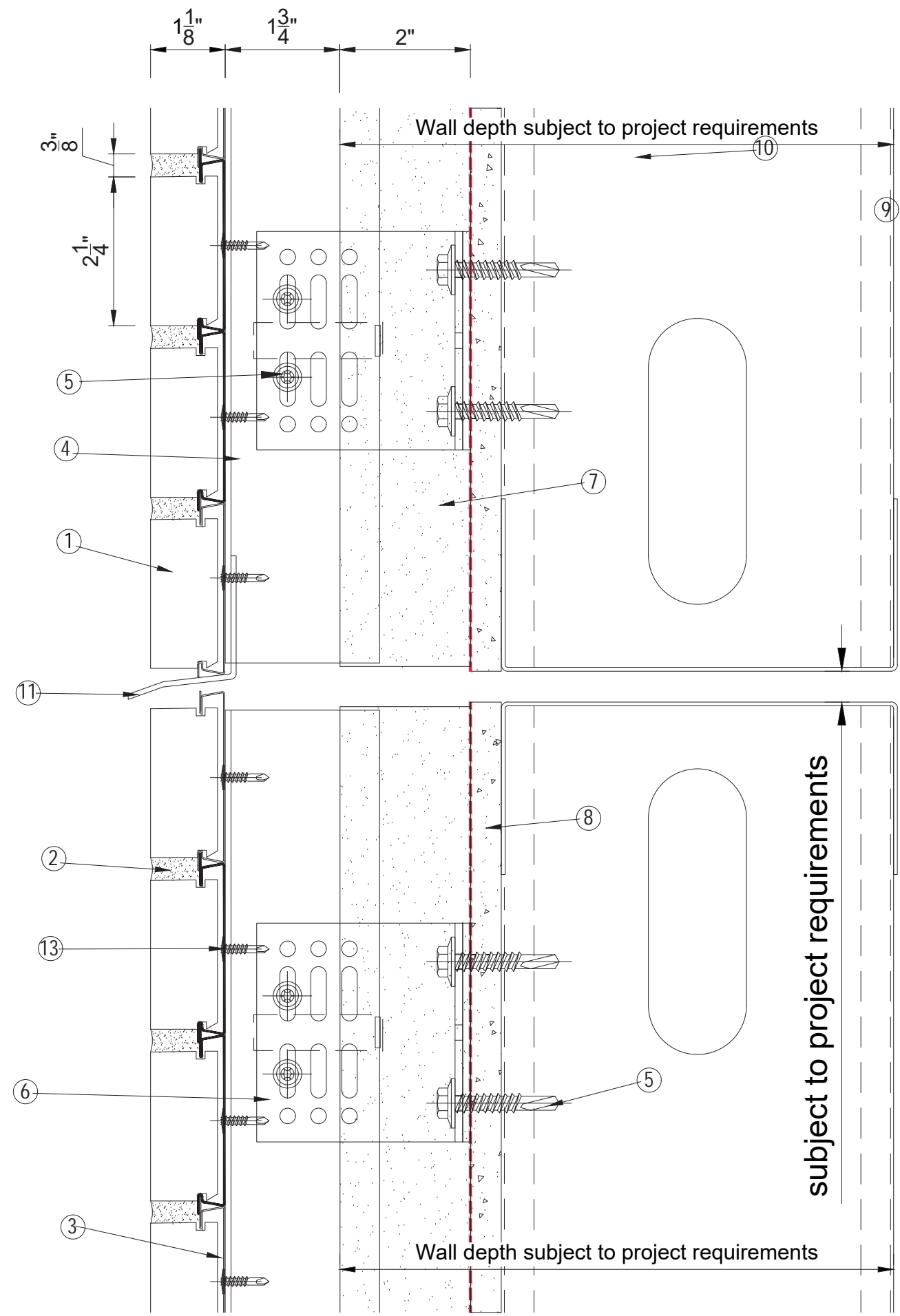
ALL ELEVATIONS ARE VIEWED FROM OUTSIDE
UNLESS OTHERWISE STATED

- ① Tru-Brix anchored brick
- ② Tru-Brix mortar
- ③ Tru-Brix tray
- ④ Vertical aluminium angle
- ⑤ Stainless Steel fixing by others subject to engineers calculations
- ⑥ Aluminium bracket with thermal shim subject to engineers calculations
- ⑦ Insulation (by others) thickness subject to U-value calculations
- ⑧ Sheathing board (by others)
- ⑨ Metal framing (by others)
- ⑩ Air/ Water barrier (by others)
- ⑪ Metal flashing (by others)
- ⑫ Caulk joint and backing rod (by others)
- ⑬ 8-18x $\frac{3}{4}$ " T-2 Lath 410 Stainless Steel

Rev.	Date	By	Comments
-	06-07-17	CDB	Approval
Drawing Status :			
FOR INFORMATION			
Contract :			
TRU-BRIX RAINSCREEN FACADE SYSTEM			



Do not scale from this drawing. If in doubt ask		
Drawing Title :		
Horizontal section detail through brick abutment		
Scale :	Checked :	Drawn : CB
NTS	Date :	Date : 06-07-17
Size	Drawing No.	Rev.
A3	DET-010	/



ALL ELEVATIONS ARE VIEWED FROM OUTSIDE UNLESS OTHERWISE STATED

- ① Tru-Brix anchored brick
- ② Tru-Brix mortar
- ③ Tru-Brix tray
- ④ Vertical aluminium angle
- ⑤ Stainless Steel fixing by others subject to engineers calculations
- ⑥ Aluminium bracket with thermal shim subject to engineers calculations
- ⑦ Insulation (by others) thickness subject to U-value calculations
- ⑧ Sheathing board (by others)
- ⑨ Metal framing (by others)
- ⑩ Air/ Water barrier (by others)
- ⑪ Metal flashing (by others)
- ⑫ Caulk joint and backing rod (by others)
- ⑬ 8-18x³/₄" T-2 Lath 410 Stainless Steel

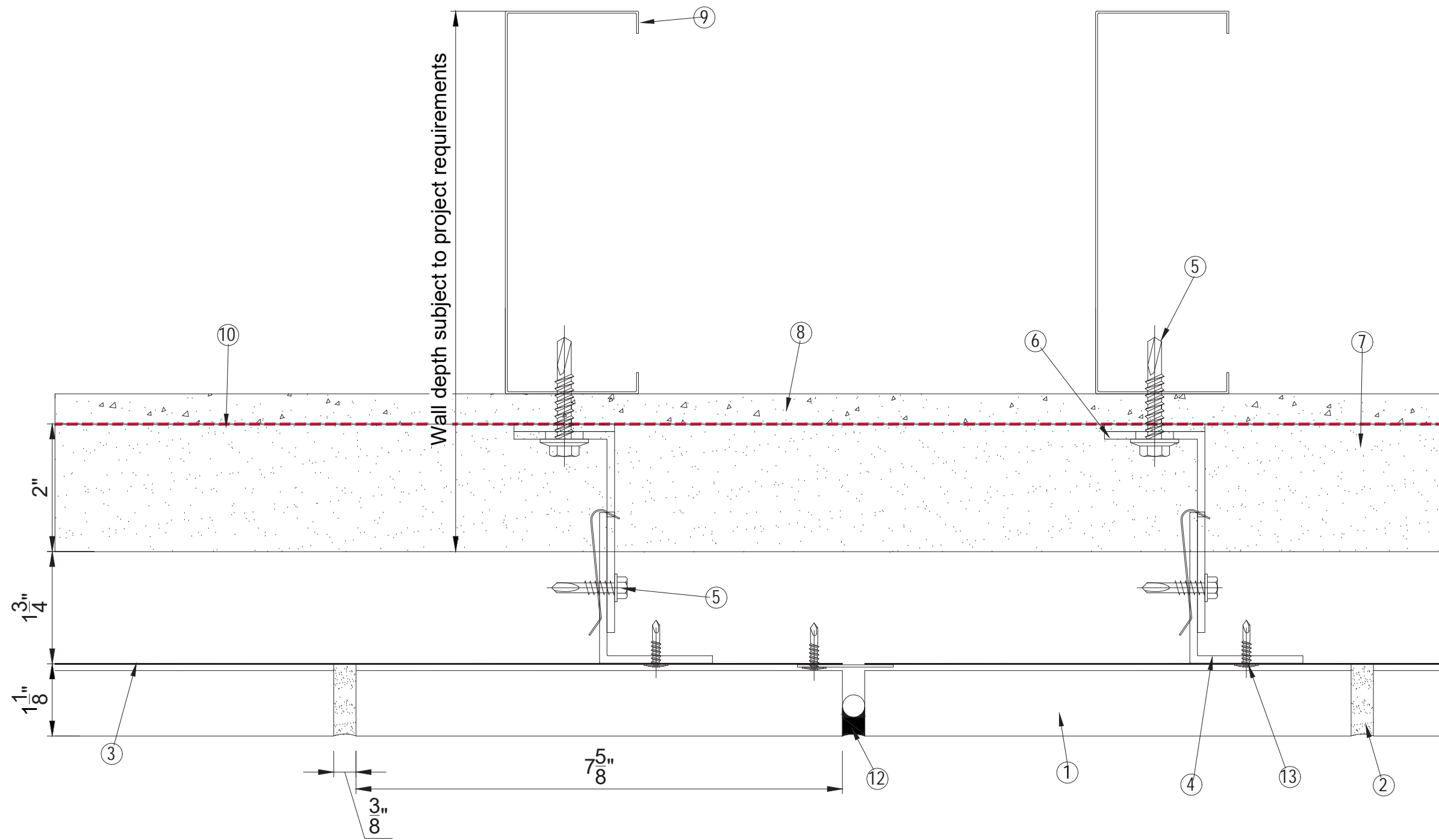
Rev.	Date	By	Comments
-	06-07-17	CDB	Approval
Drawing Status :			
FOR INFORMATION			
Contract :			
TRU-BRIX RAINSCREEN FACADE SYSTEM			



Do not scale from this drawing. If in doubt ask		
Drawing Title :		
Vertical section detail through brick deflection joint		
Scale :	Checked :	Drawn : CB
NTS	Date :	Date : 06-07-17
Size	Drawing No.	Rev.
A3	DET-011	/

ALL ELEVATIONS ARE VIEWED FROM OUTSIDE
UNLESS OTHERWISE STATED

- ① Tru-Brix anchored brick
- ② Tru-Brix mortar
- ③ Tru-Brix tray
- ④ Vertical aluminium angle
- ⑤ Stainless Steel fixing by others subject to engineers calculations
- ⑥ Aluminium bracket with thermal shim subject to engineers calculations
- ⑦ Insulation (by others) thickness subject to U-value calculations
- ⑧ Sheathing board (by others)
- ⑨ Metal framing (by others)
- ⑩ Air/ Water barrier (by others)
- ⑪ Metal flashing (by others)
- ⑫ Caulk joint and backing rod (by others)
- ⑬ 8-18x $\frac{3}{4}$ " T-2 Lath 410 Stainless Steel

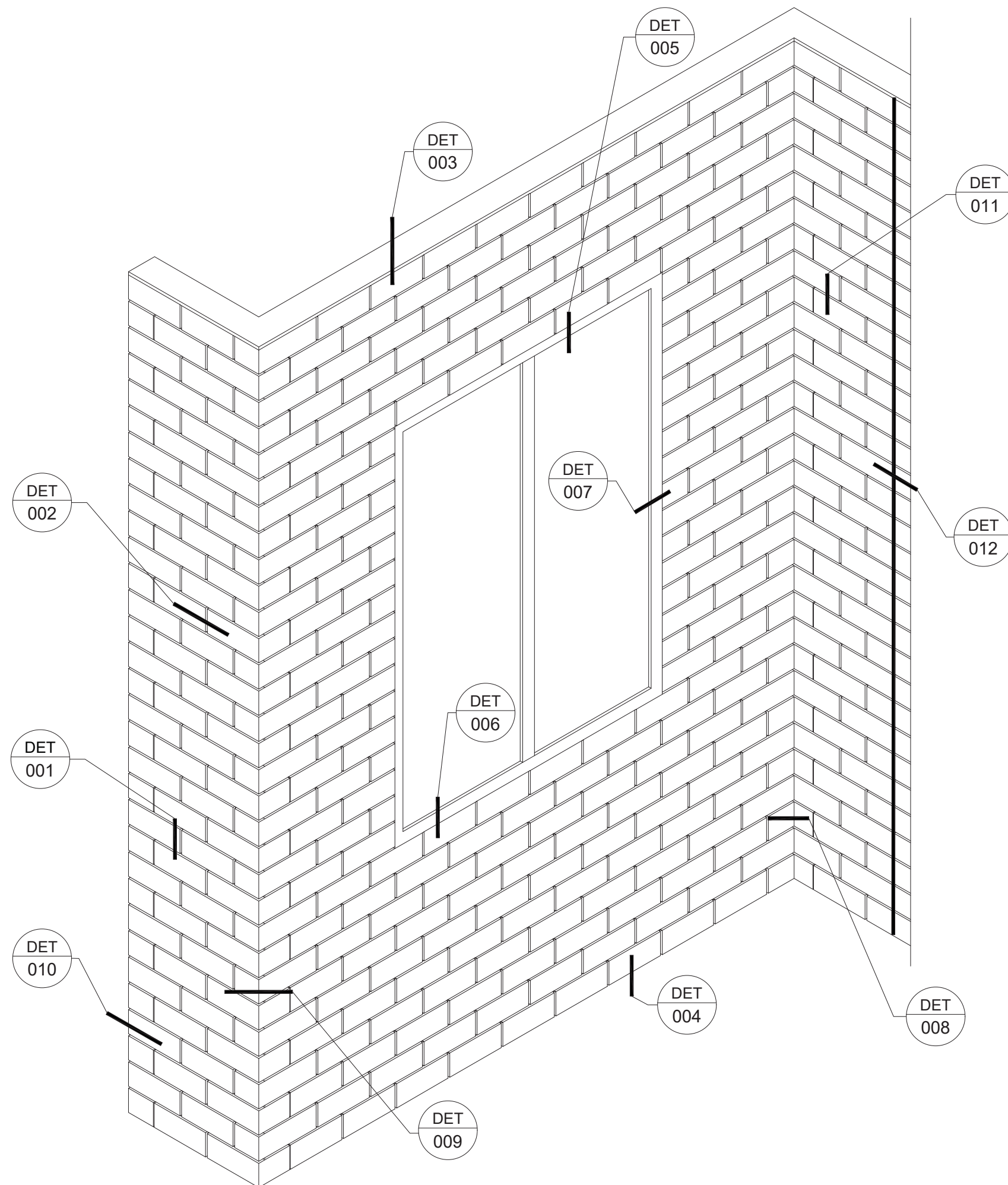


Rev.	Date	By	Comments
-	06-07-17	CDB	Approval
Drawing Status :			
FOR INFORMATION			
Contract :			
TRU-BRIX RAINSCREEN FACADE SYSTEM			



Do not scale from this drawing. If in doubt ask			
Drawing Title :			
Horizontal section detail through brick control joint			
Scale :	Checked :	Drawn : CB	
NTS	Date :	Date : 06-07-17	
Size	Drawing No.	Rev.	
A3	DET-012	/	

ALL ELEVATIONS ARE VIEWED FROM OUTSIDE
UNLESS OTHERWISE STATED



Rev.	Date	By	Comments
-	06-07-17	CDB	Approval

Drawing Status :

FOR INFORMATION

Contract :
**TRU-BRIX RAINSCREEN
FACADE SYSTEM**



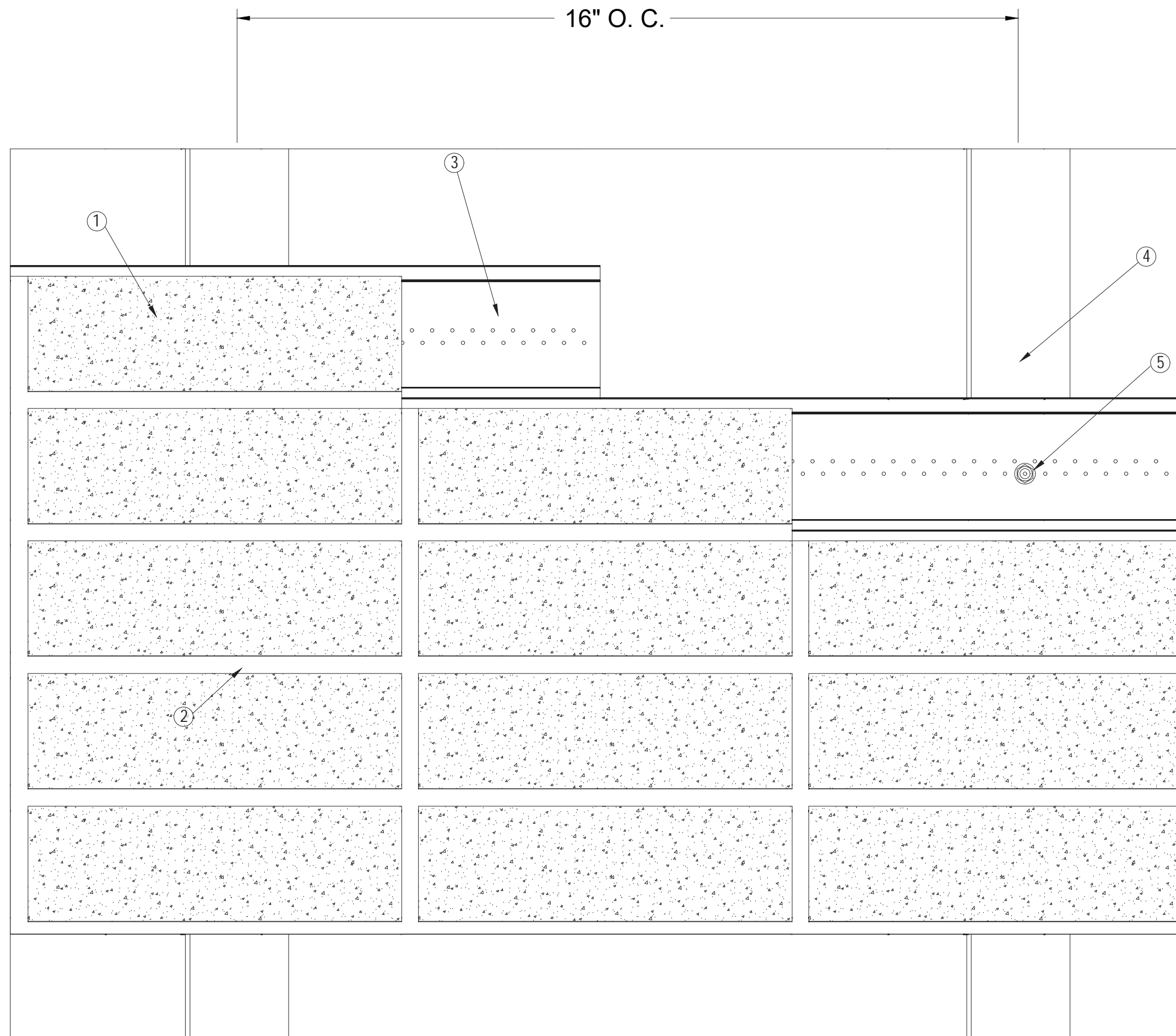
Do not scale from this drawing. If in doubt ask

Drawing Title :
Typical wall elevation

Scale :	Checked :	Drawn : CB
NTS	Date :	Date : 06-07-17

Size	Drawing No.	Rev.
A3	ELV-001	/

ALL ELEVATIONS ARE VIEWED FROM OUTSIDE
UNLESS OTHERWISE STATED



- ① Tru-Brix anchored brick
- ② Tru-Brix mortar
- ③ Tru-Brix tray
- ④ Vertical aluminium angle
- ⑤ Stainless Steel fixing subject to engineers calculations

Rev.	Date	By	Comments
-	06-07-17	CDB	Approval

Drawing Status :
FOR INFORMATION

Contract :
**TRU-BRIX RAINSCREEN
FACADE SYSTEM**



Do not scale from this drawing. If in doubt ask

Drawing Title :
**Typical elevation of Tru-Brix
assemble**

Scale : NTS	Checked : Date :	Drawn : Date : 06-07-17
-----------------------	---------------------	-----------------------------------

Size A3	Drawing No. ELV-002	Rev. /
-------------------	-------------------------------	------------------